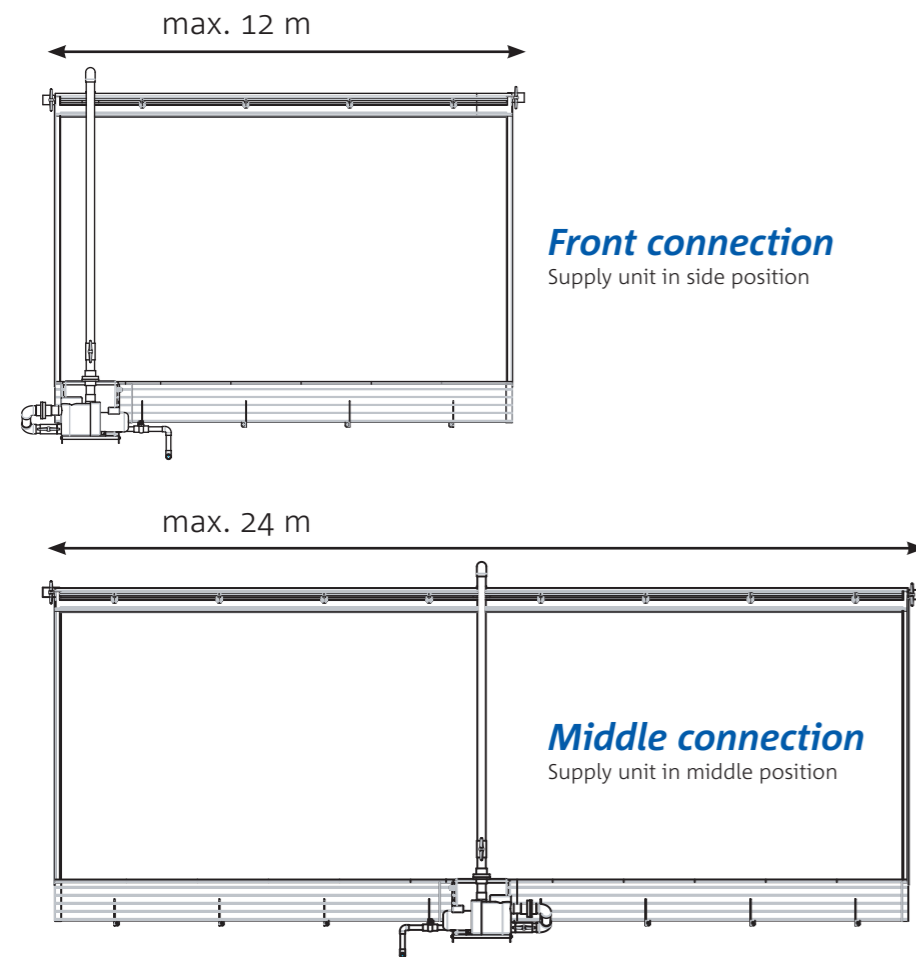


Technical data

The system is available in following variants:

Thickness Pad	Supply unit with pump	Supply unit without pump	Middle element 3 m	Middle element 10 ft.	Endkit
4"	7901	7902	7910	7911	7940
6"	7905	7906	7920	7921	7941



Technical modifications reserved.

Pad-Climate-Systems for evaporative cooling



Pad-Climate-Systems

The Barku Pad-Climate-System is made entirely of plastic.

The Barku evaporative cooling pad system is used in systems where highly efficient cooling is required. It can be used for many different cooling purposes but is particularly suitable for evaporative cooling in poultry houses.

The evaporative cooling technology

Water is circulated through the system by a pump station and supplied to the top of the cooling pad via a water distribution pipe and the deflector.

The water flows down the corrugated surface of the evaporative cooling pad. Part of the water is evaporated by the warm and dry air that passes through the pad. The rest of the water assists in washing the pad, and is drained back to the pump station through a watergutter system.

The heat that is needed for the evaporation is taken from the air itself. The air that leaves the pad is therefore cooled and humidified simultaneously without any external energy supply for the evaporation process:

An entirely natural cooling process is nature's own cooling process.

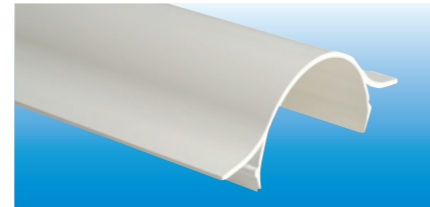
Water distribution

With the newly designed deflector we achieved an optimum water distribution throughout the pads.



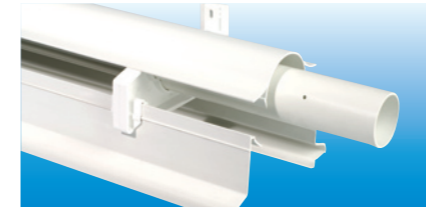
Deflector-profile

Newly designed deflector profile with unique shape for best "dripping"-results.



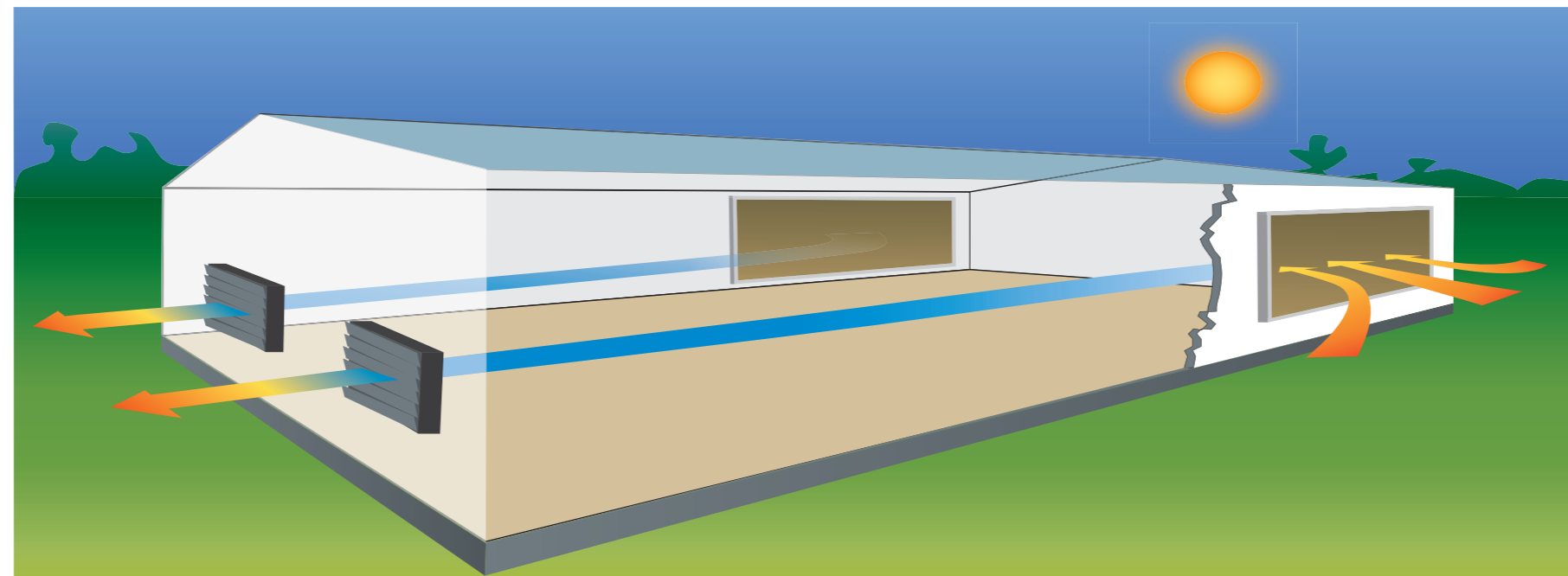
Clip-function

All profiles are to clip to the Top-bracket. Easy to assemble and disassemble.



Pad guide

Good and tight fixing of cooling-pads is achieved by the pad guide.



Water gutter

Bottom gutter with integrated water-reservoir. No additional watertank needed.



Supply unit

Complete piping accessories, bracket and centrifugal pump (optional).



Water-pump

Centrifugal pump with integrated filter and 2" pipes for the water distribution.



Pad support

Perfect water-recirculation by the newly designed pad-support.

Advantages:

- Easy Assembly due to newly designed Clip-profiles
- No Corrosion - all parts made from PVC or Stainless steel
- The water gutter contains the entire water requirement of the system. No external watertank is needed.
- perfect water distribution along the top edge of the cooling pads due to the newly developed water-deflector with integrated watertank in the bottom gutter



Water distribution along the deflector

